



Green Leaf Lab[®]

12025 NE Marx St. Portland, OR 97220
503-253-3511 / www.greenleaflabs.com
License#: 10029074C70

Quality Control Testing Official Report

Hawaiian Haze D8

Sample ID: G1K0316-05

Matrix: Industrial Hemp

Test ID: 5021899

Source ID:

Date Sampled: 11/17/21

Date Accepted: 11/17/21

Califlora Corp

Results at a Glance

Total THC : 0.2136 %

Total CBD : 7.323 %

Total CBG : 1.030 %

delta 8-THC : 8.176 % dry PASS

Pesticides : PASS

Water Activity : 0.55 PASS

Percent Moisture : 10.3 % PASS

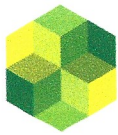


ISO 17025
ACCREDITED
LABORATORY

Eric Wendt
Chief Science Officer - 11/28/2021

These results relate only to the sample included on this report. The report may not be reproduced except in full, without the written permission of Green Leaf Lab.

This is for informational testing and is not compliance testing. Lab results apply to the sample as received.



Hawaiian Haze D8

Sample ID: G1K0316-05

Matrix: Industrial Hemp

Test ID: 5021899

Source ID:

Date Sampled: 11/17/21

Date Accepted: 11/17/21

Califlora Corp

Potency Analysis

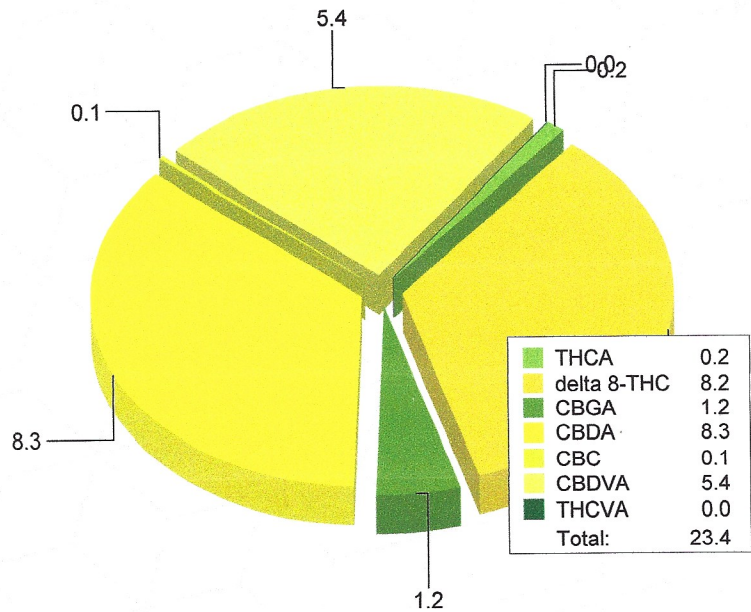
Date/Time Extracted: 11/19/21 12:12

Analysis Method/SOP: 215

Batch Identification: 2147044

	LOQ (%)	% by Wt.	mg/g
Total THC	0.0527	0.2136	2.136
Total CBD	0.0119	7.323	73.23
Total CBG	0.0046	1.030	10.3
THCA	0.0006	0.2435	2.435
delta 9-THC	0.0006	< LOQ	< LOQ
delta 8-THC	0.0261	8.176	81.76
THCV	0.0293	< LOQ	< LOQ
THCVA	0.0110	0.0302	0.302
CBD	0.0006	< LOQ	< LOQ
CBDA	0.0006	8.350	83.5
CBDV	0.0290	< LOQ	< LOQ
CBDVA	0.0096	5.383	53.83
CBN	0.0174	< LOQ	< LOQ
CBG	0.0046	< LOQ	< LOQ
CBGA	0.0046	1.174	11.74
CBC	0.0519	0.0713	0.713
Total Cannabinoids		23.43	234.3

Cannabinoids Profile



Water Activity

Date/Time Extracted: 11/19/21 14:21

Analysis Method/SOP: 102

Water Activity: 0.55 at 24°C

Action Level: 0.65

Moisture

Date/Time Extracted: 11/19/21 14:20

Analysis Method/SOP: 103

Moisture: 10.3 %

Action Level: 15%

Potency results are reported on a dry weight basis.

Total THC = delta 9-THC + (THCA * 0.877)

Total CBD = CBD + (CBDA * 0.877)

Total CBG = CBG + (CBGA * 0.878)

LOQ=Limit of Quantification, the lowest measurable concentration of an analyte.

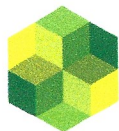


ISO 17025
ACCREDITED
LABORATORY

Eric Wendt
Chief Science Officer - 11/28/2021

These results relate only to the sample included on this report. The report may not be reproduced except in full, without the written permission of Green Leaf Lab.

This is for informational testing and is not compliance testing. Lab results apply to the sample as received.



Green Leaf Lab

12025 NE Marx St. Portland, OR 97220
503-253-3511 / www.greenleaflabs.com
License#: 10029074C70

Quality Control Testing Official Report

Hawaiian Haze D8

Sample ID: G1K0316-05 Matrix: Industrial Hemp

Test ID: 5021899

Source ID:

Date Sampled: 11/17/21

Date Accepted: 11/17/21

Califlora Corp

Pesticide Analysis in ppm

Date/Time Extracted: 11/19/21 12:39

Analysis Method/SOP: 203

Analyte	Result	Action Level	LOD	LOQ	Units	Notes	Analyte	Result	Action Level	LOD	LOQ	Units	Notes
Abamectin	< LOQ	0.5		0.04	ppm		Acephate	< LOQ	0.4		0.04	ppm	
Acequinocyl	< LOQ	2		0.04	ppm		Acetamiprid	< LOQ	0.2		0.04	ppm	
Aldicarb	< LOQ	0.4		0.04	ppm		Azoxystrobin	< LOQ	0.2		0.04	ppm	
Bifenazate	< LOQ	0.2		0.04	ppm		Bifenthrin	< LOQ	0.2		0.04	ppm	
Boscalid	< LOQ	0.4		0.04	ppm		Carbaryl	< LOQ	0.2		0.04	ppm	
Carbofuran	< LOQ	0.2		0.04	ppm		Chlorantraniliprole	< LOQ	0.2		0.04	ppm	
Chlorfenapyr	< LOQ	1		0.04	ppm		Chlorpyrifos	< LOQ	0.2		0.04	ppm	
Clofentezine	< LOQ	0.2		0.04	ppm		Cyfluthrin	< LOQ	1		0.04	ppm	
Cypermethrin	< LOQ	1		0.04	ppm		Daminozide	< LOQ	1		0.04	ppm	
DDVP (Dichlorvos)	< LOQ	1		0.04	ppm		Diazinon	< LOQ	0.2		0.04	ppm	
Dimethoate	< LOQ	0.2		0.04	ppm		Ethoprophos	< LOQ	0.2		0.04	ppm	
Etofenprox	< LOQ	0.4		0.04	ppm		Etoxazole	< LOQ	0.2		0.04	ppm	
Fenoxycarb	< LOQ	0.2		0.04	ppm		Fenpyroximate	< LOQ	0.4		0.04	ppm	
Fipronil	< LOQ	0.4		0.04	ppm		Fonicamid	< LOQ	1		0.04	ppm	
Fludioxonil	< LOQ	0.4		0.04	ppm		Hexythiazox	< LOQ	1		0.04	ppm	
Imazalil	< LOQ	0.2		0.04	ppm		Imidacloprid	< LOQ	0.4		0.04	ppm	
Kresoxim-methyl	< LOQ	0.4		0.04	ppm		Malathion	< LOQ	0.2		0.04	ppm	
Metalaxyl	< LOQ	0.2		0.04	ppm		Methiocarb	< LOQ	0.2		0.04	ppm	
Methomyl	< LOQ	0.4		0.04	ppm		Methyl parathion	< LOQ	0.2		0.04	ppm	
MGK-264	< LOQ	0.2		0.04	ppm		Myclobutanil	< LOQ	0.2		0.04	ppm	
Naled	< LOQ	0.5		0.04	ppm		Oxamyl	< LOQ	1		0.04	ppm	
Paclobutrazol	< LOQ	0.4		0.04	ppm		Permethrins	< LOQ	0.2		0.04	ppm	
Phosmet	< LOQ	0.2		0.04	ppm		Piperonyl butoxide	< LOQ	2		0.1	ppm	
Prallethrin	< LOQ	0.2		0.04	ppm		Propiconazole	< LOQ	0.4		0.04	ppm	
Propoxur	< LOQ	0.2		0.04	ppm		Pyrethrins	< LOQ	1		0.1	ppm	
Pyridaben	< LOQ	0.2		0.04	ppm		Spinosad	< LOQ	0.2		0.04	ppm	
Spiromesifen	< LOQ	0.2		0.04	ppm		Spirotetramat	< LOQ	0.2		0.04	ppm	
Spiroxamine	< LOQ	0.4		0.04	ppm		Tebuconazole	< LOQ	0.4		0.04	ppm	
Thiacloprid	< LOQ	0.2		0.04	ppm		Thiamethoxam	< LOQ	0.2		0.04	ppm	
Trifloxystrobin	< LOQ	0.2		0.04	ppm								

ND - Compound not detected

Results above the Action Level fail state testing requirements and will be highlighted Red.



ISO 17025
ACCREDITED
LABORATORY

Eric Wendt
Chief Science Officer - 11/28/2021

These results relate only to the sample included on this report. The report may not be reproduced except in full, without the written permission of Green Leaf Lab.

This is for informational testing and is not compliance testing. Lab results apply to the sample as received.



Quality Control Potency

Batch: 2147044 - 215-Useable

Blank(2147044-BLK1)							
Analyte	Result	LOQ	Units	%Recovery Limits	Extracted	Analyzed	Notes
THCA	< LOQ	0.0005	%		11/19/21 12:12	11/19/21 17:45	
delta 9-THC	< LOQ	0.0005	%		11/19/21 12:12	11/19/21 17:45	
THCV	< LOQ	0.0263	%		11/19/21 12:12	11/19/21 17:45	
THCVA	< LOQ	0.0099	%		11/19/21 12:12	11/19/21 17:45	
CBD	< LOQ	0.0005	%		11/19/21 12:12	11/19/21 17:45	
CBDA	< LOQ	0.0005	%		11/19/21 12:12	11/19/21 17:45	
CBDV	< LOQ	0.0260	%		11/19/21 12:12	11/19/21 17:45	
CBDVA	< LOQ	0.0086	%		11/19/21 12:12	11/19/21 17:45	
CBN	< LOQ	0.0156	%		11/19/21 12:12	11/19/21 17:45	
CBG	< LOQ	0.0042	%		11/19/21 12:12	11/19/21 17:45	
CBGA	< LOQ	0.0042	%		11/19/21 12:12	11/19/21 17:45	
CBC	< LOQ	0.0465	%		11/19/21 12:12	11/19/21 17:45	

Reference(2147044-SRM1)							
Analyte	% Recovery	LOQ	Units	%Recovery Limits	Extracted	Analyzed	Notes
THCA	103	0.0005	%	80-120	11/19/21 12:12	11/19/21 18:08	
delta 9-THC	101	0.0005	%	80-120	11/19/21 12:12	11/19/21 18:08	
CBD	106	0.0005	%	80-120	11/19/21 12:12	11/19/21 18:08	
CBDA	99.4	0.0005	%	80-120	11/19/21 12:12	11/19/21 18:08	

Pesticide Analysis

Batch: 2147045 - 203

Blank(2147045-BLK1)							
Analyte	Result	LOQ	Units	%Recovery Limits	Extracted	Analyzed	Notes
Abamectin	< LOQ	0.04	ppm		11/19/21 12:39	11/19/21 22:29	
DDVP (Dichlorvos)	< LOQ	0.04	ppm		11/19/21 12:39	11/19/21 22:29	
Acephate	< LOQ	0.04	ppm		11/19/21 12:39	11/19/21 22:29	
Acequinocyl	< LOQ	0.04	ppm		11/19/21 12:39	11/19/21 22:29	
Acetamiprid	< LOQ	0.04	ppm		11/19/21 12:39	11/19/21 22:29	
Aldicarb	< LOQ	0.04	ppm		11/19/21 12:39	11/19/21 22:29	
Azoxystrobin	< LOQ	0.04	ppm		11/19/21 12:39	11/19/21 22:29	
Bifenazate	< LOQ	0.04	ppm		11/19/21 12:39	11/19/21 22:29	
Bifenthrin	< LOQ	0.04	ppm		11/19/21 12:39	11/19/21 22:29	
Boscalid	< LOQ	0.04	ppm		11/19/21 12:39	11/19/21 18:52	
Carbaryl	< LOQ	0.04	ppm		11/19/21 12:39	11/19/21 22:29	
Carbofuran	< LOQ	0.04	ppm		11/19/21 12:39	11/19/21 22:29	
Chlorantraniliprole	< LOQ	0.04	ppm		11/19/21 12:39	11/19/21 22:29	
Chlorfenapyr	< LOQ	0.04	ppm		11/19/21 12:39	11/19/21 18:52	
Chlorpyrifos	< LOQ	0.04	ppm		11/19/21 12:39	11/19/21 22:29	



ISO 17025
ACCREDITED
LABORATORY

Eric Wendt
Chief Science Officer - 11/28/2021

These results relate only to the sample included on this report. The report may not be reproduced except in full, without the written permission of Green Leaf Lab.

This is for informational testing and is not compliance testing. Lab results apply to the sample as received.



Quality Control Pesticide Analysis (Continued)

Batch: 2147045 - 203 (Continued)

Blank(2147045-BLK1)							
Analyte	Result	LOQ	Units	%Recovery Limits	Extracted	Analyzed	Notes
Clofentezine	< LOQ	0.04	ppm		11/19/21 12:39	11/19/21 22:29	
Cyfluthrin	< LOQ	0.04	ppm		11/19/21 12:39	11/19/21 18:52	
Cypermethrin	< LOQ	0.04	ppm		11/19/21 12:39	11/19/21 18:52	
Daminozide	< LOQ	0.04	ppm		11/19/21 12:39	11/19/21 22:29	
Diazinon	< LOQ	0.04	ppm		11/19/21 12:39	11/19/21 22:29	
Dimethoate	< LOQ	0.04	ppm		11/19/21 12:39	11/19/21 22:29	
Ethoprophos	< LOQ	0.04	ppm		11/19/21 12:39	11/19/21 22:29	
Etofenprox	< LOQ	0.04	ppm		11/19/21 12:39	11/19/21 22:29	
Etoxazole	< LOQ	0.04	ppm		11/19/21 12:39	11/19/21 22:29	
Fenoxycarb	< LOQ	0.04	ppm		11/19/21 12:39	11/19/21 22:29	
Fenpyroximate	< LOQ	0.04	ppm		11/19/21 12:39	11/19/21 22:29	
Fipronil	< LOQ	0.04	ppm		11/19/21 12:39	11/19/21 18:52	
Fonicamid	< LOQ	0.04	ppm		11/19/21 12:39	11/19/21 22:29	
Fludioxonil	< LOQ	0.04	ppm		11/19/21 12:39	11/19/21 18:52	
Hexythiazox	< LOQ	0.04	ppm		11/19/21 12:39	11/19/21 22:29	
Imazalil	< LOQ	0.04	ppm		11/19/21 12:39	11/19/21 22:29	
Imidacloprid	< LOQ	0.04	ppm		11/19/21 12:39	11/19/21 22:29	
Kresoxim-methyl	< LOQ	0.04	ppm		11/19/21 12:39	11/19/21 18:52	
Metalaxyl	< LOQ	0.04	ppm		11/19/21 12:39	11/19/21 22:29	
Malathion	< LOQ	0.04	ppm		11/19/21 12:39	11/19/21 18:52	
Methiocarb	< LOQ	0.04	ppm		11/19/21 12:39	11/19/21 22:29	
Methomyl	< LOQ	0.04	ppm		11/19/21 12:39	11/19/21 22:29	
Myclobutanil	< LOQ	0.04	ppm		11/19/21 12:39	11/19/21 22:29	
Methyl parathion	< LOQ	0.04	ppm		11/19/21 12:39	11/19/21 18:52	
Naled	< LOQ	0.04	ppm		11/19/21 12:39	11/19/21 22:29	
MGK-264	< LOQ	0.04	ppm		11/19/21 12:39	11/19/21 18:52	
Oxamyl	< LOQ	0.04	ppm		11/19/21 12:39	11/19/21 22:29	
Paclobutrazol	< LOQ	0.04	ppm		11/19/21 12:39	11/19/21 22:29	
Phosmet	< LOQ	0.04	ppm		11/19/21 12:39	11/19/21 22:29	
Permethrins	< LOQ	0.04	ppm		11/19/21 12:39	11/19/21 18:52	
Piperonyl butoxide	< LOQ	0.1	ppm		11/19/21 12:39	11/19/21 22:29	
Prallethrin	< LOQ	0.04	ppm		11/19/21 12:39	11/19/21 22:29	
Propiconazole	< LOQ	0.04	ppm		11/19/21 12:39	11/19/21 18:52	
Propoxur	< LOQ	0.04	ppm		11/19/21 12:39	11/19/21 22:29	
Pyrethrins	< LOQ	0.1	ppm		11/19/21 12:39	11/19/21 22:29	
Pyridaben	< LOQ	0.04	ppm		11/19/21 12:39	11/19/21 22:29	
Spinosad	< LOQ	0.04	ppm		11/19/21 12:39	11/19/21 22:29	
Spiromesifen	< LOQ	0.04	ppm		11/19/21 12:39	11/19/21 22:29	



Eric Wendt
Chief Science Officer - 11/28/2021

These results relate only to the sample included on this report. The report may not be reproduced except in full, without the written permission of Green Leaf Lab.

This is for informational testing and is not compliance testing. Lab results apply to the sample as received.



Quality Control Pesticide Analysis (Continued)

Batch: 2147045 - 203 (Continued)

Blank(2147045-BLK1)							
Analyte	Result	LOQ	Units	%Recovery Limits	Extracted	Analyzed	Notes
Spirotetramat	< LOQ	0.04	ppm		11/19/21 12:39	11/19/21 22:29	
Spiroxamine	< LOQ	0.04	ppm		11/19/21 12:39	11/19/21 22:29	
Tebuconazole	< LOQ	0.04	ppm		11/19/21 12:39	11/19/21 22:29	
Thiacloprid	< LOQ	0.04	ppm		11/19/21 12:39	11/19/21 22:29	
Thiamethoxam	< LOQ	0.04	ppm		11/19/21 12:39	11/19/21 22:29	
Trifloxystrobin	< LOQ	0.04	ppm		11/19/21 12:39	11/19/21 22:29	

LCS(2147045-BS1)							
Analyte	% Recovery	LOQ	Units	%Recovery Limits	Extracted	Analyzed	Notes
Abamectin	71.6	0.04	ppm	70-130	11/19/21 12:39	11/19/21 22:52	
DDVP (Dichlorvos)	101	0.04	ppm	70-130	11/19/21 12:39	11/19/21 22:52	
Acephate	99.1	0.04	ppm	70-130	11/19/21 12:39	11/19/21 22:52	
Acequinocyl	85.8	0.04	ppm	52-97	11/19/21 12:39	11/19/21 22:52	
Acetamiprid	101	0.04	ppm	70-130	11/19/21 12:39	11/19/21 22:52	
Aldicarb	96.1	0.04	ppm	70-130	11/19/21 12:39	11/19/21 22:52	
Azoxystrobin	104	0.04	ppm	70-130	11/19/21 12:39	11/19/21 22:52	
Bifenazate	107	0.04	ppm	70-130	11/19/21 12:39	11/19/21 22:52	
Bifenthrin	95.6	0.04	ppm	70-130	11/19/21 12:39	11/19/21 22:52	
Boscalid	94.4	0.04	ppm	70-130	11/19/21 12:39	11/19/21 19:14	
Carbaryl	99.5	0.04	ppm	70-130	11/19/21 12:39	11/19/21 22:52	
Carbofuran	99.2	0.04	ppm	70-130	11/19/21 12:39	11/19/21 22:52	
Chlorantraniliprole	125	0.04	ppm	26.2-145	11/19/21 12:39	11/19/21 22:52	
Chlorfenapyr	99.7	0.04	ppm	71-140	11/19/21 12:39	11/19/21 19:14	
Chlorpyrifos	104	0.04	ppm	70-130	11/19/21 12:39	11/19/21 22:52	
Clofentezine	98.5	0.04	ppm	14.4-62.3	11/19/21 12:39	11/19/21 22:52	BSH
Cyfluthrin	95.8	0.04	ppm	70-130	11/19/21 12:39	11/19/21 19:14	
Cypermethrin	80.4	0.04	ppm	70-130	11/19/21 12:39	11/19/21 19:14	
Daminozide	78.4	0.04	ppm	11-74.6	11/19/21 12:39	11/19/21 22:52	BSH
Diazinon	104	0.04	ppm	70-130	11/19/21 12:39	11/19/21 22:52	
Dimethoate	99.4	0.04	ppm	70-130	11/19/21 12:39	11/19/21 22:52	
Ethoprophos	107	0.04	ppm	70-130	11/19/21 12:39	11/19/21 22:52	
Etofenprox	87.5	0.04	ppm	70-130	11/19/21 12:39	11/19/21 22:52	
Etoxazole	100	0.04	ppm	70-130	11/19/21 12:39	11/19/21 22:52	
Fenoxycarb	107	0.04	ppm	70-130	11/19/21 12:39	11/19/21 22:52	
Fenpyroximate	96.0	0.04	ppm	50-100	11/19/21 12:39	11/19/21 22:52	
Fipronil	87.1	0.04	ppm	70-130	11/19/21 12:39	11/19/21 19:14	
Fonicamid	89.5	0.04	ppm	70-130	11/19/21 12:39	11/19/21 22:52	
Fludioxonil	80.1	0.04	ppm	70-130	11/19/21 12:39	11/19/21 19:14	
Hexythiazox	101	0.04	ppm	66-116	11/19/21 12:39	11/19/21 22:52	



Eric Wendt
Chief Science Officer - 11/28/2021

These results relate only to the sample included on this report. The report may not be reproduced except in full, without the written permission of Green Leaf Lab.

This is for informational testing and is not compliance testing. Lab results apply to the sample as received.



Quality Control Pesticide Analysis (Continued)

Batch: 2147045 - 203 (Continued)

LCS(2147045-BS1)									
Analyte	% Recovery	LOQ	Units	%Recovery Limits	Extracted	Analized	Notes		
Imazalil	104	0.04	ppm	58-96.4	11/19/21 12:39	11/19/21 22:52	BSH		
Imidacloprid	93.7	0.04	ppm	70-130	11/19/21 12:39	11/19/21 22:52			
Kresoxim-methyl	92.0	0.04	ppm	70-130	11/19/21 12:39	11/19/21 19:14			
Metalaxyl	103	0.04	ppm	70-130	11/19/21 12:39	11/19/21 22:52			
Malathion	93.0	0.04	ppm	70-130	11/19/21 12:39	11/19/21 19:14			
Methiocarb	95.7	0.04	ppm	70-130	11/19/21 12:39	11/19/21 22:52			
Methomyl	93.6	0.04	ppm	70-130	11/19/21 12:39	11/19/21 22:52			
Myclobutanil	100	0.04	ppm	70-130	11/19/21 12:39	11/19/21 22:52			
Methyl parathion	70.3	0.04	ppm	61-124	11/19/21 12:39	11/19/21 19:14			
Naled	98.6	0.04	ppm	36-93	11/19/21 12:39	11/19/21 22:52	BSH		
MGK-264	100	0.04	ppm	70-130	11/19/21 12:39	11/19/21 19:14			
Oxamyl	88.3	0.04	ppm	70-130	11/19/21 12:39	11/19/21 22:52			
Paclobutrazol	100	0.04	ppm	70-130	11/19/21 12:39	11/19/21 22:52			
Phosmet	93.9	0.04	ppm	70-130	11/19/21 12:39	11/19/21 22:52			
Permethrins	84.6	0.04	ppm	70-130	11/19/21 12:39	11/19/21 19:14			
Piperonyl butoxide	152	0.1	ppm	57-134	11/19/21 12:39	11/19/21 22:52	BSH		
Prallethrin	94.8	0.04	ppm	70-130	11/19/21 12:39	11/19/21 22:52			
Propiconazole	88.1	0.04	ppm	67-119	11/19/21 12:39	11/19/21 19:14			
Propoxur	98.3	0.04	ppm	70-130	11/19/21 12:39	11/19/21 22:52			
Pyrethrins	55.1	0.1	ppm	40-109	11/19/21 12:39	11/19/21 22:52			
Pyridaben	95.8	0.04	ppm	70-130	11/19/21 12:39	11/19/21 22:52			
Spinosad	109	0.04	ppm	50-130	11/19/21 12:39	11/19/21 22:52			
Spiromesifen	92.7	0.04	ppm	70-130	11/19/21 12:39	11/19/21 22:52			
Spirotetramat	102	0.04	ppm	70-130	11/19/21 12:39	11/19/21 22:52			
Spiroxamine	104	0.04	ppm	60-153	11/19/21 12:39	11/19/21 22:52			
Tebuconazole	101	0.04	ppm	70-130	11/19/21 12:39	11/19/21 22:52			
Thiacloprid	100	0.04	ppm	70-130	11/19/21 12:39	11/19/21 22:52			
Thiamethoxam	95.2	0.04	ppm	70-130	11/19/21 12:39	11/19/21 22:52			
Trifloxystrobin	101	0.04	ppm	70-130	11/19/21 12:39	11/19/21 22:52			

Moisture Content

Batch: 2147041 - 103

Reference(2147041-SRM1)									
Analyte	% Recovery	LOQ	Units	%Recovery Limits	Extracted	Analized	Notes		
Percent Moisture	114		%	80-120	11/19/21 14:20	11/19/21 14:20			

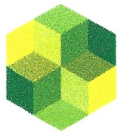
Reference(2147041-SRM2)									
Analyte	% Recovery	LOQ	Units	%Recovery Limits	Extracted	Analized	Notes		
Percent Moisture	118		%	80-120	11/19/21 14:20	11/19/21 14:20			



Eric Wendt
Chief Science Officer - 11/28/2021

These results relate only to the sample included on this report. The report may not be reproduced except in full, without the written permission of Green Leaf Lab.

This is for informational testing and is not compliance testing. Lab results apply to the sample as received.



Notes and Definitions

- ATM Non-cannabis matrix related interference or suppression of Internal standard
- BLI Baseline Interference - Cannabinoid peak interference in chromatographic baseline affecting QC recovery .
- BLK Analyte detected in method blank, but not associated samples.
- BSH Blank Spike High - Blank Spike recovery above method limit. no detections in samples.
- BSL Blank Spike Low - Blank Spike recovery below lower method limit, analyte chromatography reviewed manually for all samples.
- C Interference due to co-elution
- CBD Interference due to co-elution
- CV1 CBD matrix interference on GC Pest chromatography
- CV2 CCV was above acceptance criteria, Non-detect samples are considered acceptable.
- INF CCV was below acceptance criteria, sample still exceeds regulatory limit.
- ISH One or more QC falls outside acceptance criteria. Data entered into LIMS for informational purposes only.
- ISL Internal Standard concentration is above acceptance criteria.
- MSH Internal Standard concentration is below acceptance criteria.
- MSI Matrix Spike High - Matrix Spike recovery above method limits.
- MSL Matrix Spike Interference - Matrix spike source sample contains analyte hit above calibration affecting recovery accuracy in Matrix Spike.
- TPP Matrix Spike Low - Matrix Spike recovery below lower method limit, analyte chromatography reviewed manually for all samples.
- U Internal Standard concentration outside control limit due to matrix interference



Eric Wendt
Chief Science Officer - 11/28/2021

These results relate only to the sample included on this report. The report may not be reproduced except in full, without the written permission of Green Leaf Lab.

This is for informational testing and is not compliance testing. Lab results apply to the sample as received.